

LDM CONFIGURATION TOOL TRAINING INSTRUCTIONS

1. Configuration TOOL

1.1 Purpose

- Allow access to the current LDM configuration loaded into a unit
- Provide a pictorial representation of the configuration
- Modify the existing configuration
- Load and install another configuration to be used as is or be modified and to save the loaded configuration

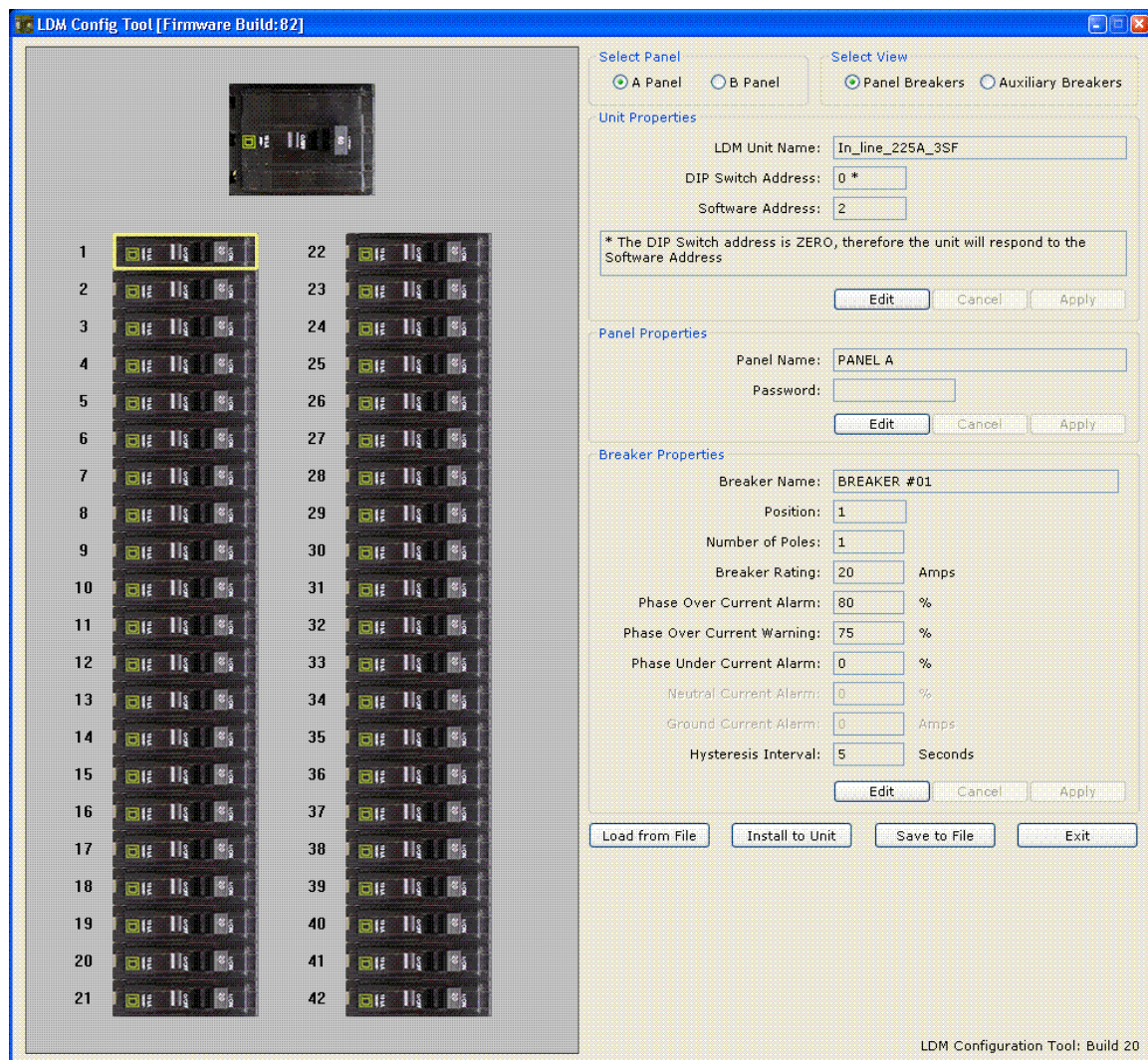


Figure 1: Configuration Tool

1.2 Using the “Configuration Tool”

1.2.1 Current configuration loaded on unit will be displayed/See Fig. 1

- Panel A or B can be selected
- View of Breakers or Auxiliary Breakers can be selected
 - Panel Breakers selected
 - If In_Line configuration, breakers will be shown
 - If I_Line configuration, subfeeds will be shown
 - Auxiliary Breakers selected
 - If In_Line configuration, subfeeds shown if applicable
 - If I_Line configuration, additional subfeeds shown if applicable

1.2.2 Modify current configuration

- Unit Properties
 - Configuration name
 - Dipswitch or software address displayed
 - Edit
 - All highlighted properties can be modified.
 - Grayed out properties are fixed. Cannot be modified.
- Panel Properties
 - Panel Name
 - Password - Modbus Commands
 - Edit - All panel properties can be modified.
 - Breaker Properties
 - Breaker Name
 - Position
 - Number of Poles
 - Breaker Rating
 - Phase Over Current Alarm
 - Phase Over Current Warning
 - Phase Under Current Alarm
 - Neutral Current Alarm
 - Ground Current Alarm
 - Hysteresis Interval
 - Edit - As the mouse moves over mains, breakers, or subfeeds, they are highlighted in yellow. Once a main, breaker, or subfeed is selected, it is framed by a yellow rectangle and its identity displayed in the “Breaker Name” location.

- Edit (select breaker) - All highlighted properties can be modified using “Edit”. The grayed out properties (position and number of poles) will change automatically if modified./See Figs.1, 2, and 3
- Position and number of poles change automatically when a breaker is modified using the process of deletion or addition. Cannot be modified with the Edit button.

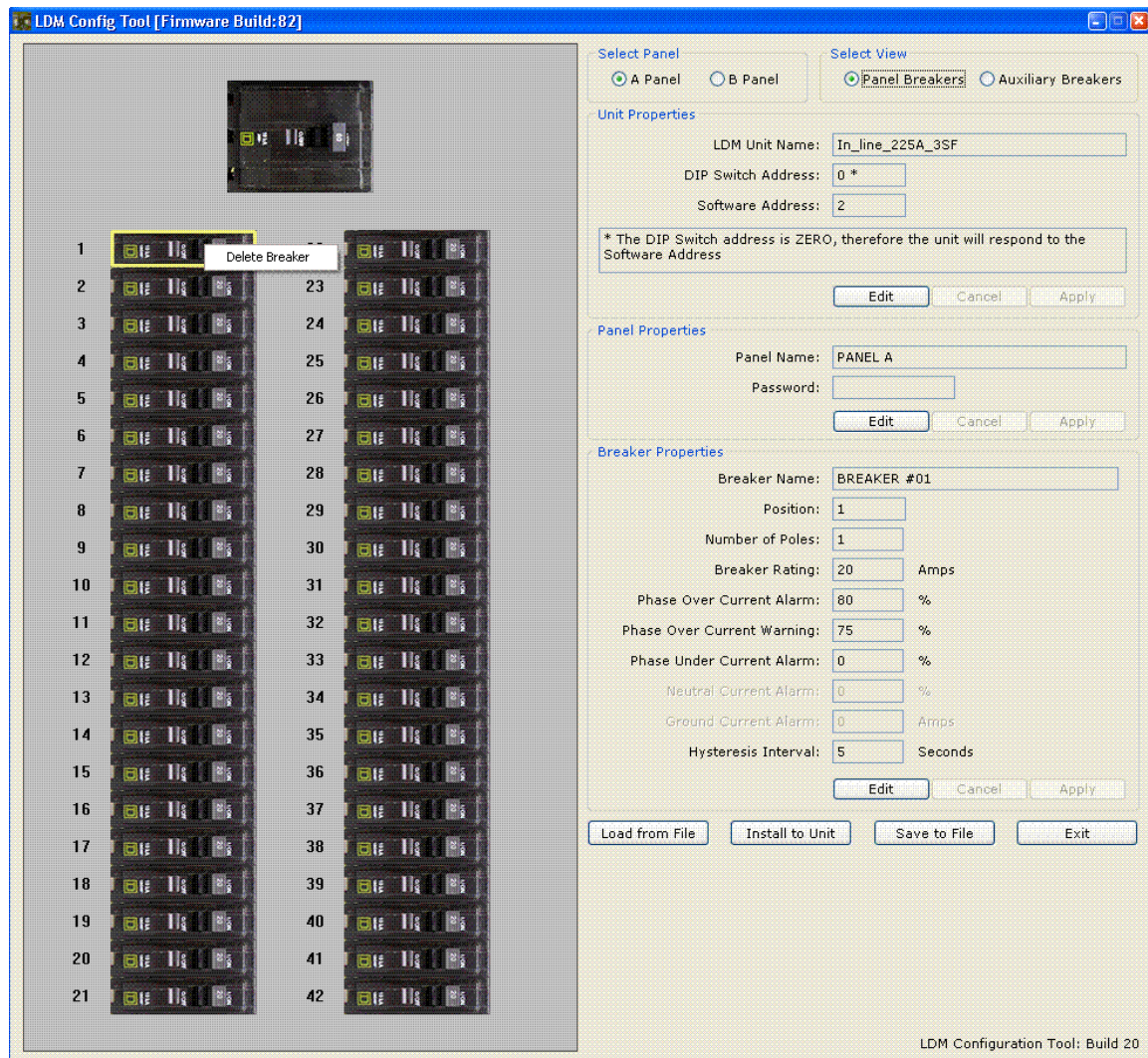


Figure 2

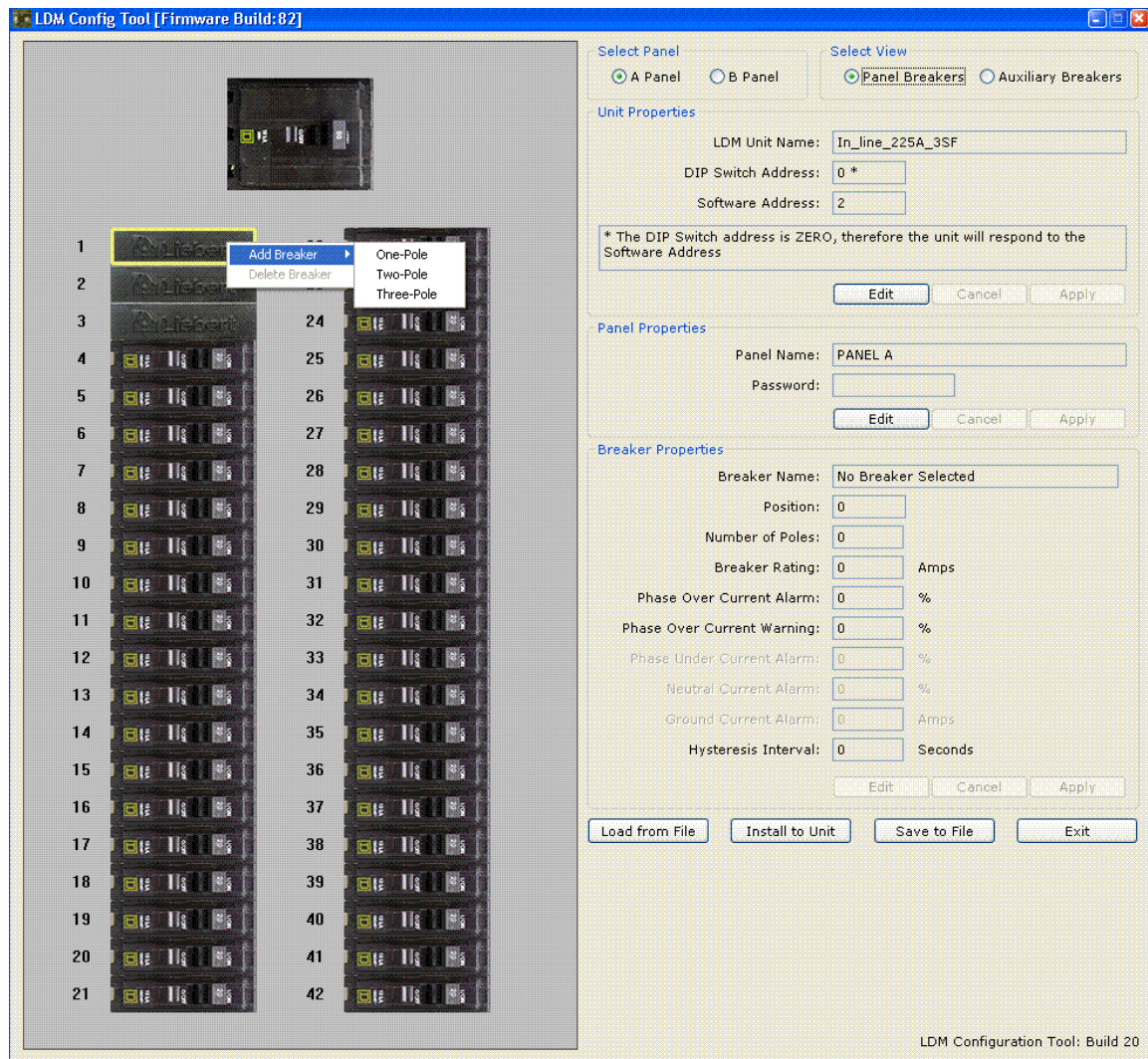


Figure 3

- Edit (Main/Subfeed selected) - All highlighted properties can be modified using "Edit". The grayed out properties (position and number of poles) CANNOT be modified/See FIG. 4
 - Their physical characteristics (position and number of poles) are fixed. Position and number of poles CANNOT be modified. The process of deletion is available for subfeeds only. Mains cannot be added or deleted.

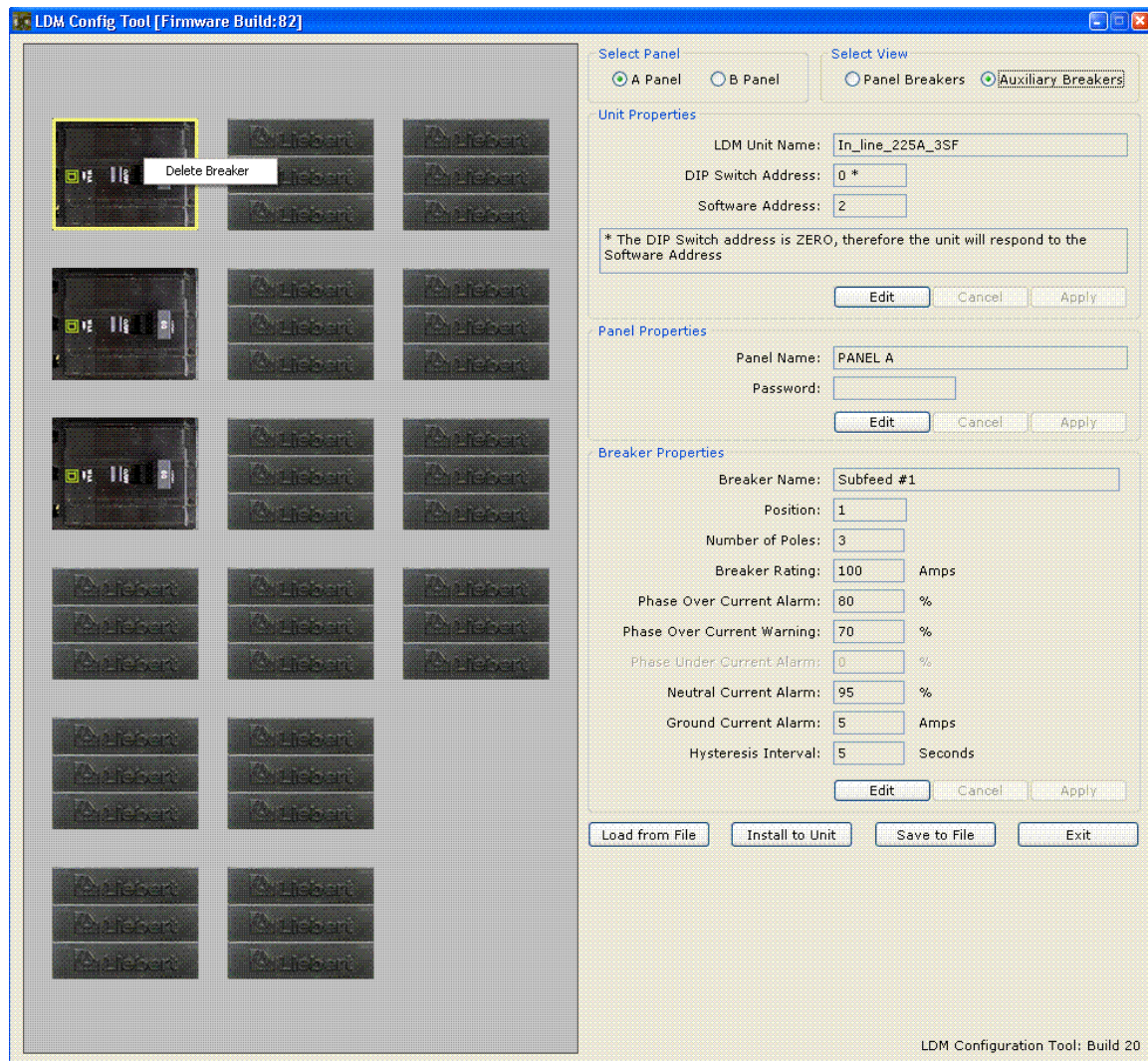


Figure 4

1.3 Lower Screen Toggle Buttons/See Fig. 4

- Load from File
- Install to Unit
- Save to File
- Exit

Revision History

Rev. 5 October 30, 2007 - Page 7: Changed Edit Section for Mains and Subfeeds from “Deletion” and “Addition” functions not being available to “Deletion” being available for Subfeeds only.

Separated LDM Training Instructions into three separate training documents.